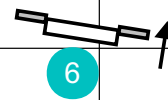
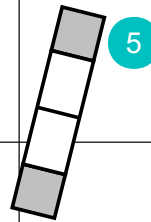
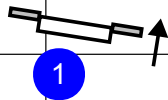
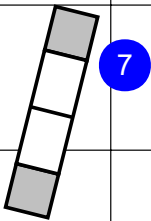
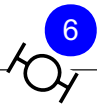
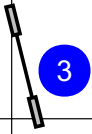


ARFF 6-1-22: Weaves after a Double



This is a wide-open sequence. Be prepared to run. The weaves come straight on after the double. Some dogs may see a single pole instead of the line, so make sure your dog registers the weaves. A blind cross after #3 may work best.

How to handle #2-#4? You'll want your dog on your right over the A-frame. Then you have to U it over the double and make the weave entry. Stay on your toes!